

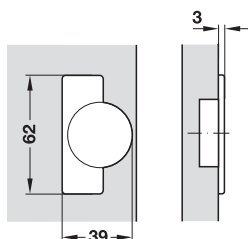
Lift up flap hinge

For lightweight flaps up to 1.5 kg

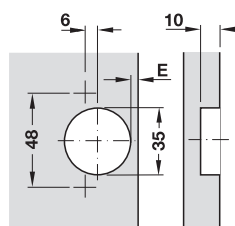
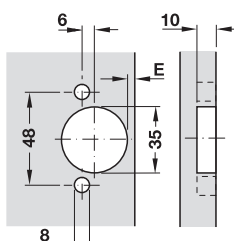


- > Opening angle: 95°
- > Material: Steel cup and hinge arm
- > Finish: Galvanized
- > Installation: Flap for screw fixing to cabinet
- > Flap weight: Up to 1.5 kg
- > Dim.: For flap thickness: 12–22 mm,
for flap width: max. 450 mm,
for flap height: max. 315 mm
- > Adjustment facility: Height and side adjustment
- > With or without automatic closing spring (optional)

Installation dimensions



Drilling pattern for cup fixing



Note

Trial mounting is recommended.

For press fitting
Drilling pattern 48/6

For screw fixing
Drilling pattern 48/6

Example calculation of the flap overlay:

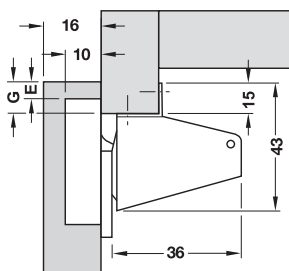
Overlay G = 4 mm + distance to cup E (4 mm) = 8 mm

→ For straight flaps

For blind corner mounting (overlay), with angled screw-on plate



Two-sided screw fixing to blind corner

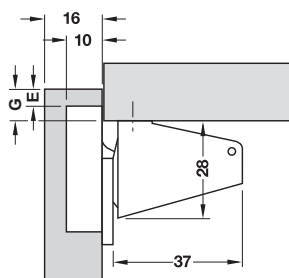


Cup fixing	Drilling pattern	With automatic closing spring	Without automatic closing spring
For press fitting	48/6	356.35.713	356.35.731
For screw fixing	48/6	356.35.815	—

Packing: 1 or 250 pieces

→ For straight flaps

For overlay mounting, with straight screw-on plate



Cup fixing	Drilling pattern	With automatic closing spring
For press fitting	48/6	356.35.723

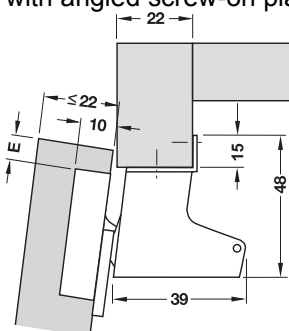
Packing: 1 or 250 pieces

→ For straight and convex flaps (post-forming)

For blind corner mounting (overlay), with angled screw-on plate



Two-sided screw fixing to blind corner



Cup fixing	Drilling pattern	With automatic closing spring
For press fitting	48/6	356.35.740

Packing: 1 or 200 pieces



5